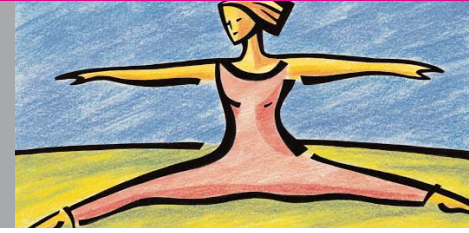


CLEARVIEW EASY LH



A reliable ovulation test for you and your patients



The measurement of luteinising hormone (LH) concentrations in urine is established as an effective tool in the management of fertility. The mid-cycle surge in LH has been shown to precede ovulation by approximately 24-36 hours. Thus, for most couples, detection of the LH surge can help them decide the optimum timing of intercourse for conception. The Easy LH test is a one-step immunoassay:

- Presents clear results
- Has 99% accuracy in detecting the LH surge
- Results in just 3 minutes
- Tests any time of the day
- Simple to perform and interpret
- Offers 2 easy sampling procedures

Urinary LH and ovulation

Ultrasound studies of follicle rupture have confirmed that the LH surge detected in urine occurs between approximately 24 and 36 hours before ovulation and is consistent with findings in plasma.

Other methods of detecting ovulation – such as by basal body temperature, changes in cervical mucus as reflected by the Insler scoring method, or even by saliva testing – are known to be imprecise. The most reliable methods of testing for ovulation – either by ultrasound monitoring or radioimmunoassay – can be expensive and require repeated clinic visits.

2 easy sampling procedures

- Dip the test stick in the urine for 15 seconds
- Hold test stick in the urine flow for 3-7 seconds

CLEARVIEW EASY LH



Reliable results

In a laboratory study comparing 3 different lot numbers of Clearview LH Easy with the leading commercial rapid LH assay in 117 cycles with definite LH surges, the overall accuracy of Clearview LH Easy was 98.9%.

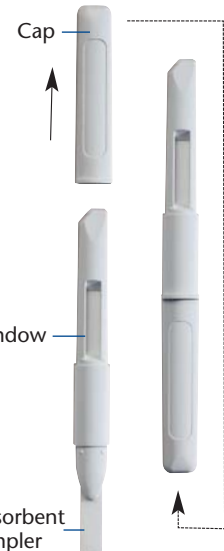
	Commercial LH assay (117 positive cycles)		
	Lot 1	Lot 2	Lot 3
Clearview EASY LH No. of detected positive LH surges*	116	115	116
Accuracy of Clearview EASY LH	99.2%	98.3%	99.2%
Overall accuracy of Clearview EASY LH	98.9%		

* Test was considered positive when LH surge was detected within +/- 2 days of leading commercial LH assay.

LH detection made simple

1

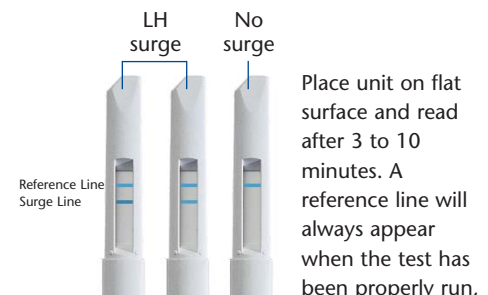
Follow one of the two recommended sampling procedures.



2

Remove cap and place it over the sampler.

3



Place unit on flat surface and read after 3 to 10 minutes. A reference line will always appear when the test has been properly run, even if there is no LH in the urine. Increasing amounts of LH causes the blue surge line to become stronger. An LH surge line similar to or darker than the reference line is indicative of the LH surge, and the patient should have intercourse with her partner within the next 48 hours.

Unipath Limited, Bedford MK44 3UP, UK

Tel: +44 (0)1234 835000 ■ Fax: +44 (0)1234 835009 ■ www.clearview.com